

thermo scientific



Powerful at every turn

Thermo Scientific™ General Purpose Pro
and Plus Centrifuge Series

ThermoFisher
SCIENTIFIC

Multifuge X Pro and Megafuge ST Plus Centrifuge Series

Thermo Scientific™ Multifuge™ X Pro and Megafuge™ ST Plus centrifuges are designed to offer improved performance, reliability, consistency and safety.

With fixed-angle rotor RCF (Relative Centrifugal Force) of over 25000 x g, and swinging bucket rotor RCF of over 7000 x g, even the toughest separations can be completed better and faster.

Scientists working across biopharmaceutical, academic research and clinical diagnostic applications can choose between ventilated or refrigerated 1.6L (4x400ml) and 4L (4x1000ml) floor and bench models.





User interface



Multifuge X Pro touchscreen interface

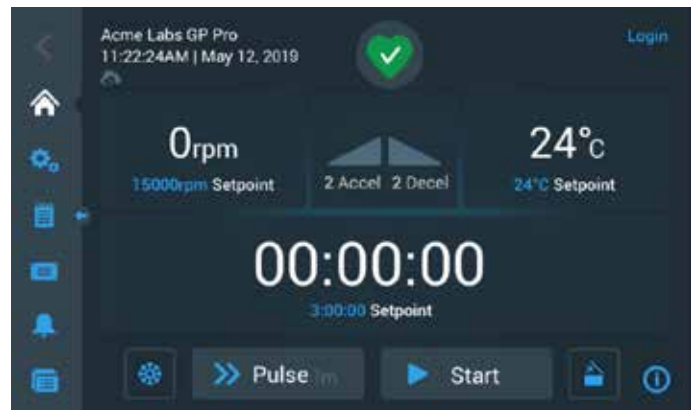


Megafuge ST Plus user interface

Simple touchscreen programming

Discover the Multifuge X Pro touchscreen features including:

- Easily accessible menu bar
- Centrifuge health icon for at-a-glance monitoring
- Time-saving pre-temp button
- Quick spins
- Useful information icon for additional support



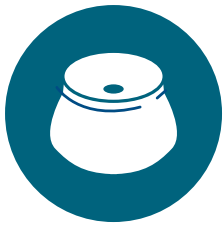
Rotor exchange

Thermo Scientific™ Auto-Lock™ Rotor Exchange

Helps save time for faster results:

- Secure, ergonomic push-button rotor exchange in as little as three seconds
- Trouble-free installation and removal with no tools required
- Full chamber access for cleaning convenience and minimizes risk of drip tray contamination
- Flexibility to quickly switch between applications and evolve with the changing needs of your laboratory





Carbon fiber rotors

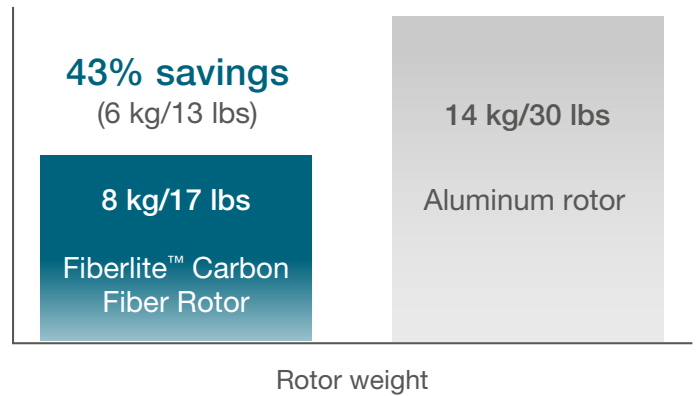


Superior ergonomics with enhanced performance

- Thermo Scientific™ Fiberlite™ rotor/lid combinations offer protection to the user, the centrifuge and the samples during centrifugation*
- Outstanding durability provided by carbon fiber construction is supported by a 15 year Fiberlite™ Rotor warranty
- Fiberlite™ Rotors can reach higher speeds than their metal counterparts, improving separations and results
- Superior ergonomics driven by lightweight construction, integrated handle design and Auto-Lock™ Rotor exchange

Weight savings with carbon fiber rotors:

Weight comparison of fully loaded 6 x 250 mL capacity floor model rotors*



*Biocontainment certified by National Institute for Health Protection, Porton Down, UK



Biocontainment lids

Thermo Scientific™ ClickSeal™ Biocontainment Lids One-handed sample protection

- Biocontainment sealing options for glove-friendly, one-handed open/close capability are ergonomically designed for both right and left-handed operations
- Simple operation for all laboratory users, eliminating multi-turn screw caps and complicated high pressure clips
- Biocontainment certification by National Institute for Health Protection, Porton Down, UK



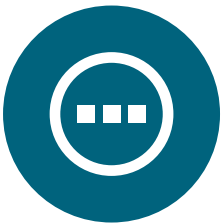


Safety and ergonomics

Hand grip cue on the lid indicates the easiest and best one-handed closure location.



Improved safety without reduced pinch-points designed to prevent accidental injury. Motorized gas springs with safety protection.



Enhancements

Accessory tray holds tools or samples as you prepare for your run.



Front USB port for easier plug in and data transfer





Thermo Scientific™ Multifuge™ X4R Pro



Thermo Scientific™ Megafuge™ ST4R Plus

4 L Benchtop Centrifuges: specifications and ordering information

Specifications	Multifuge X4 Pro		Multifuge X4R Pro		Megafuge ST4 Plus		Megafuge ST4R Plus	
	IVD	General Use Only	IVD	General Use Only	IVD	General Use Only	IVD	General Use Only
Swinging Buckets Rotors								
Maximum Capacity	4 x 1000 mL with TX-1000 rotor							
Maximum Speed	6000 rpm with BIOShield 1000A rotor				5300 rpm with BIOShield 1000A rotor			
Maximum RCF	7164 x g with BIOShield 1000A rotor				5590 x g with BIOShield 1000A rotor			
Fixed Angle Rotors								
Maximum Capacity	6 x 250 mL with F14-6x250LE rotor				6 x 100 mL with F15-6x100 or F10-6x100 rotor			
Maximum Speed	15200 rpm with F21-48x2, Microliter 48x2 or Microliter 30x2							
Maximum RCF	25830 x g with Microliter 30x2							
Centrifuge Details								
Control System	Microprocessor							
Drive System	Direct, Brushless induction low profile motor							
Accel/Decel Profiles	Choices of 9 Accel / 10 Decel Rates							
Material	front, top, sides: PC-ABS plastic painted with 2K PUR-based lacquer; metal housing: cold rolled steel with powder paint; centrifuge bowl: stainless steel; centrifuge feet: rubber							
Safety Features	SMARTSpin Imbalance detection, finger-pinch prevention, crash-proof construction							
Warranty	5 Year Limited (2 years standard warranty + 3 additional years on motor and refrigeration)							
Includes	printed English user manual, USB stick with 28 languages of user manual, corrosion resistance oil (70009824), power cord, declaration of conformity							
Temperature Range	N/A		-10°C to +40°C		N/A		-10°C to +40°C	
Number of Compatible Rotors	17		17		12		12	
Display Details								
Display	Full color touch screen interface				Push button and high contrast LCD interface			
Run Time	max 99h, 59min, 59sec; also with continuous and customizable pulse				max 9h, 59min; also with continuous and pulse modes			
Timer	count up or down				count down only			
Program Storage	up to 100 run programs				up to 6 run programs			
Programmability	via easy access touch screen menu				via 6 direct access buttons			
Dimensions, Weight								
Width (inches) Exterior	22.3		29.4		22.3		29.4	
Width (cm) Exterior	56.6		74.6		56.6		74.6	
Depth (inches) Exterior	27.2		27.2		27.2		27.2	
Depth (cm) Exterior	69.0		69.0		69.0		69.0	
Height (inches) Exterior	14.3		14.2		14.3		14.2	
Height (cm) Exterior	36.2		36.1		36.2		36.1	
Height (inches) Open Cover	33.9		33.9		33.9		33.9	
Height (cm) Open Cover	86.1		86.0		86.1		86.0	
Footprint Dimensions (inches)	22.3 x 23.1		29.4 x 23.0		22.3 x 23.1		29.4 x 23.0	
Footprint Dimensions (cm)	56.6 x 58.8		74.6 x 58.4		56.6 x 58.8		74.6 x 58.4	
Net Weight (lbs)	196		265		196		265	
Net Weight (kgs)	89		120		89		120	
Certifications and Standards								
IVD/MD	X		X		X		X	
Certifications	EN/UL/IEC 61010-1, EN/UL/IEC 61010-2-020 and 61010-2-101, EN/UL/IEC 61326-1, EN/UL/IEC 61326-2-6, FCC part 15							
Standards	ISO 14971, ISO 13485, ISO 9001							
Ordering Information								
Ordering Information	Multifuge X4 Pro		Multifuge X4R Pro		Megafuge ST4 Plus		Megafuge ST4R Plus	
	IVD	General Use Only	IVD	General Use Only	IVD	General Use Only	IVD	General Use Only
230V [§]	75009500*	75009900	75009515* / 75009615* [§]	75009915 / 75009815 [§]	75009503*	75009903	75009518* / 75009618* [§]	75009918 / 75009818 [§]
120V	75009501*	N/A	75009516*	N/A	75009504*	N/A	75009519*	N/A

*Indicates a centrifuge, rotor and/or adapter product approved for use in clinical applications; see user manual for details.

[§] 220V / 60 Hz [Korea, etc.]



Thermo Scientific™ Multifuge™ X4R
Pro Floor Model



Thermo Scientific™ Megafuge™ ST4R
Plus Floor Model

4 L Floor Model Centrifuges: specifications and ordering information

Specifications	Multifuge X4F Pro		Multifuge X4RF Pro		Megafuge ST4F Plus		Megafuge ST4RF Plus	
	IVD	General Use Only	IVD	General Use Only	IVD	General Use Only	IVD	General Use Only
Swinging Buckets Rotors								
Maximum Capacity	4 x 1000 mL with TX-1000 rotor							
Maximum Speed	6000 rpm with BIOShield 1000A rotor				5300 rpm with BIOShield 1000A rotor			
Maximum RCF	7164 x g with BIOShield 1000A rotor				5590 x g with BIOShield 1000A rotor			
Fixed Angle Rotors								
Maximum Capacity	6 x 250 mL with F14-6x250LE rotor				6 x 100 mL with F15-6x100 or F10-6x100 rotor			
Maximum Speed	15200 rpm with F21-48x2, Microliter 48x2 or Microliter 30x2							
Maximum RCF	25830 x g with Microliter 30x2							
Centrifuge Details								
Control System	Microprocessor							
Drive System	Direct, Brushless induction low profile motor							
Accel/Decel Profiles	Choices of 9 Accel / 10 Decel Rates							
Material	front, top, sides: PC-ABS plastic painted with 2K PUR-based lacquer; metal housing: cold rolled steel with powder paint; centrifuge bowl: stainless steel; centrifuge feet: rubber							
Safety Features	SMARTSpin Imbalance detection, finger-pinch prevention, crash-proof construction							
Warranty	5 Year Limited (2 years standard warranty + 3 additional years on motor and refrigeration)							
Includes	printed English user manual, USB stick with 28 languages of user manual, corrosion resistance oil (70009824), power cord, declaration of conformity							
Temperature Range	N/A		-10°C to +40°C		N/A		-10°C to +40°C	
Number of Compatible Rotors	17		17		12		12	
Display Details								
Display	Full color touch screen interface				Push button and high contrast LCD interface			
Run Time	max 99h, 59min, 59sec; also with continuous and customizable pulse				max 9h, 59min; also with continuous and pulse modes			
Timer	count up or down				count down only			
Program Storage	up to 100 run programs				up to 6 run programs			
Programmability	via easy access touch screen menu				via 6 direct access buttons			
Dimensions, Weight								
Width (inches) Exterior	22.3		22.3		22.3		22.3	
Width (cm) Exterior	56.6		56.6		56.6		56.6	
Depth (inches) Exterior	27.2		27.2		27.2		27.2	
Depth (cm) Exterior	69.0		69.0		69.0		69.0	
Height (inches) Exterior	32.8		32.8		32.8		32.8	
Height (cm) Exterior	83.5		83.5		83.5		83.5	
Height (inches) Open Cover	54.1		54.1		54.1		54.1	
Height (cm) Open Cover	135		135		135		135	
Footprint Dimensions (inches)	22.3 x 23.1		22.3 x 23.0		22.3 x 23.1		22.3 x 23.0	
Footprint Dimensions (cm)	56.6 x 58.8		56.6 x 58.4		56.6 x 58.8		56.6 x 58.4	
Net Weight (lbs)	335		319		335		319	
Net Weight (kgs)	152		145		152		145	
Certifications and Standards								
IVD/MD	X		X		X		X	
Certifications	EN/UL/IEC 61010-1, EN/UL/IEC 61010-2-020 and 61010-2-101, EN/UL/IEC 61326-1, EN/UL/IEC 61326-2-6, FCC part 15							
Standards	ISO 14971, ISO 13485, ISO 9001							
Ordering Information	Multifuge X4F Pro		Multifuge X4RF Pro		Megafuge ST4F Plus		Megafuge ST4RF Plus	
	IVD	General Use Only	IVD	General Use Only	IVD	General Use Only	IVD	General Use Only
230V [§]	75009530*	75009930	75009536*	75009936	75009961*	75009947	75009962*	75009948
120V	75009531*	N/A	75009537*	N/A	75009960*	N/A	75009946*	N/A

*Indicates a centrifuge, rotor and/or adapter product approved for use in clinical applications; see user manual for details.

[§] 220V / 60 Hz [Korea, etc.]



Thermo Scientific™ Multifuge™ X1 and X1R Pro

Thermo Scientific™ Megafuge™ ST1 and ST1R Plus

1.6 L Benchtop Centrifuges: specifications and ordering information

Specifications	Multifuge X1 Pro		Multifuge X1R Pro		Megafuge ST1 Plus		Megafuge ST1R Plus	
	IVD	General Use Only	IVD	General Use Only	IVD	General Use Only	IVD	General Use Only
Swinging Buckets Rotors								
Maximum Capacity	4 x 400 mL with TX-400 rotor							
Maximum Speed	6300 rpm with BIOShield 720 rotor				5300 rpm with BIOShield 720 rotor			
Maximum RCF	7188 x g with BIOShield 720 rotor				5088 x g with BIOShield 720 rotor			
Fixed Angle Rotors								
Maximum Capacity	6x100 mL with F15 6x100y				6x100 mL with F15 6x100y			
Maximum Speed	15200 rpm with F21-48x2, Microliter 48x2 or Microliter 30x2							
Maximum RCF	25830 x g with Microliter 30x2							
Centrifuge Details								
Control System	Microprocessor							
Drive System	Direct, Brushless induction low profile motor							
Accel/Decel Profiles	Choices of 9 Accel / 10 Decel Rates							
Material	front, top, sides: PC-ABS plastic painted with 2K PUR-based lacquer; metal housing: cold rolled steel with powder paint; centrifuge bowl: stainless steel; centrifuge feet: rubber							
Safety Features	SMARTSpin imbalance detection, finger-pinch prevention, crash-proof construction							
Warranty	5 Year Limited (2 years standard warranty + 3 additional years on motor and refrigeration)							
Includes	printed English user manual, USB stick with 28 languages of user manual, corrosion resistance oil (70009824), power cord, declaration of conformity							
Temperature Range	N/A		-10°C to +40°C		N/A		-10°C to +40°C	
Number of Compatible Rotors	16		16		14		14	
Display Details								
Display	Full color touch screen interface				Push button and high contrast LCD interface			
Run Time	max 99h, 59min, 59sec; also with continuous and customizable pulse				max 9h, 59min; also with continuous and pulse modes			
Timer	count up or down				count down only			
Program Storage	up to 100 run programs				up to 6 run programs			
Programmability	via easy access touch screen menu				via 6 direct access buttons			
Dimensions, Weight								
Width (inches) Exterior	17.5		24.6		17.5		24.6	
Width (cm) Exterior	44.5		62.5		44.5		62.5	
Depth (inches) Exterior	26		26		26		26	
Depth (cm) Exterior	66		66		66		66	
Height (inches) Exterior	14.3		14.2		14.3		14.2	
Height (cm) Exterior	36.2		36.1		36.2		36.1	
Height (inches) Open Cover	33.6		33.6		33.6		33.6	
Height (cm) Open Cover	85.5		85.5		85.5		85.5	
Footprint Dimensions (inches)	17.5 x 23.1		24.6 x 23.0		17.5 x 23.1		24.6 x 23.0	
Footprint Dimensions (cm)	44.5 x 58.8		62.5 x 58.4		44.5 x 58.8		62.5 x 58.4	
Net Weight (lbs)	134		207		134		207	
Net Weight (kgs)	61		94		61		94	
Certifications and Standards								
IVD/MD	X		X		X		X	
Certifications	EN/UL/IEC 61010-1, EN/UL/IEC 61010-2-020 and 61010-2-101, EN/UL/IEC 61326-1, EN/UL/IEC 61326-2-6, FCC part 15							
Standards	ISO 14971, ISO 13485, ISO 9001							
Ordering Information	Multifuge X1 Pro		Multifuge X1R Pro		Megafuge ST1 Plus		Megafuge ST1R Plus	
	IVD	General Use Only	IVD	General Use Only	IVD	General Use Only	IVD	General Use Only
230V [§]	75009210*	75009710	75009250*	75009750	75009230*	75009730	75009270*	75009770
120V	75009210*	N/A	75009251*	N/A	75009230*	N/A	75009271*	N/A

*Indicates a centrifuge, rotor and/or adapter product approved for use in clinical applications; see user manual for details.

§ 220V / 60 Hz [Korea, etc.]

Find out more at thermofisher.com/gp-pro-centrifuge